



NAAC RE-ACCREDITED WITH 'A' GRADE

Sevadal Mahila Mahavidyalaya

Place for Higher Learning & Research (Research Academy)

Sakkardara Square, Umrer Road, Nagpur-440 024

E-mail: sevamahilamv@gmail.com

Website: www.sevadalmahilamahavidyalaya.ac.in

INFRASTRUCTURAL FACILITIES FOR DIFFERENTLY-ABLED

Principal

Sevadal Mahila Mahavidyalaya
Umrer Road, Nagpur-9.

NAAC RE-ACCREDITED WITH 'A' GRADE

SEVADAL MAHILA MAHAVIDYALAYA

Place for Higher learning & Research (Research Academy)

Sakkardara Chow, Umber Road, Nagpur-440024

E-mail: smm_college@yahoo.co.in, sevamahilamv@gmail.com

Facilities available in the college for differently-abled students.

Differently-abled persons need special arrangements in the college for their mobility and independent functioning. Any architectural barriers that disabled persons find difficult for their day-to-day functioning makes their life more miserable. Sevalal Mahila Mahavidyalaya has taken special initiative to address accessibility related issues and ensure that all existing structures as well as future construction projects on the campus are made disabled friendly.

Physical Facilities:-

As the college has three story building, it is very necessary to have lift facility for the differently-abled admitted students. In order to make it happen practically, survey for the appropriate space has been done. The service of experts has been pressed to make it possible. Estimate has been taken from various agencies through consultations. Looking at the need of the differently-abled students and visitors it is decided to make special financial provision and complete the project in near future.

Though the concept of lift is yet to be materialized, college has different mechanism to address the problem of differently-abled students.

The Library Department has made a provision of using online Sugamya Pustakalya portal for the visually impaired students to make their learning easy. Even if the student is in remote area with the vision disability, it would be very helpful and would not hamper her ardent desire to excel in studies. College would definitely come with more friendly facilities for them.




Principal
Sevalal Mahila Mahavidyalaya
Umber Road, Nagpur-9.

The College has well facilitated and furnished reading room for the students and visitors. Though the reading room is well facilitated for the common normal students, within the same facilities the add on facility is provided to the differently-abled students. College has specially constructed reading room facility on the ground floor to make accessible to differently-abled students. The reading room has attached washroom suitable for disabled students. Even the path is made friendly for them with good slant slop without stairs.

So far as examination of differently-abled students is concerned, RTM Nagpur University, Nagpur has made a special provision to allot half an hour extra time to the students who are differently-abled. The college is bound to follow the rules and regulations set by the University that is final authority for conducting the examination. College provides the same conditional facility.

Provision of wheel chair and stretcher is made for to and fro movement within the campus. To make it more convenient for them an examination room is set up on the ground floor so that they could cozy to concentrate on the examination.



Examination room on the ground floor for the differently-abled examinees.



Wheel Chair and Stretcher for differently-abled students.

Shm


Principal
Sevadal Mahila Mahavidyalaya
Umrer Road, Nagpur-9.



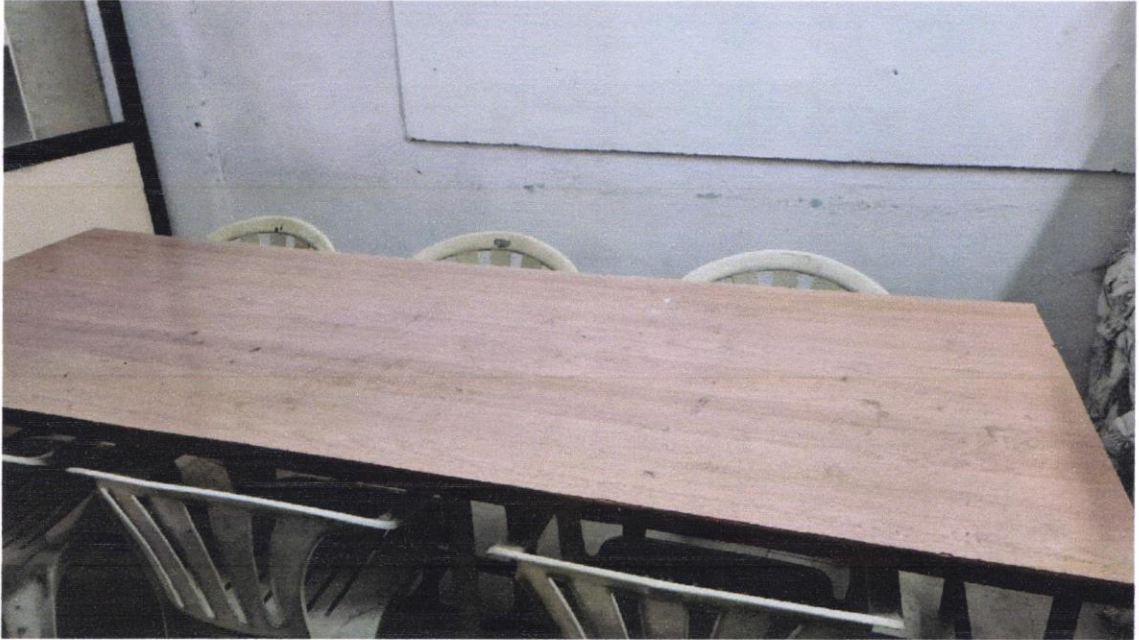
Arrangement in the examination room for the differently-abled examinees.



Arrangement in the reading room on the ground floor for the differently-abled students along with the general students.

Smm


Principal
Sevadal Mahila Mahavidyalaya
Umrer Road, Nagpur-9.



Arrangement in the reading room on the ground floor for the differently-abled students along with the general .students.

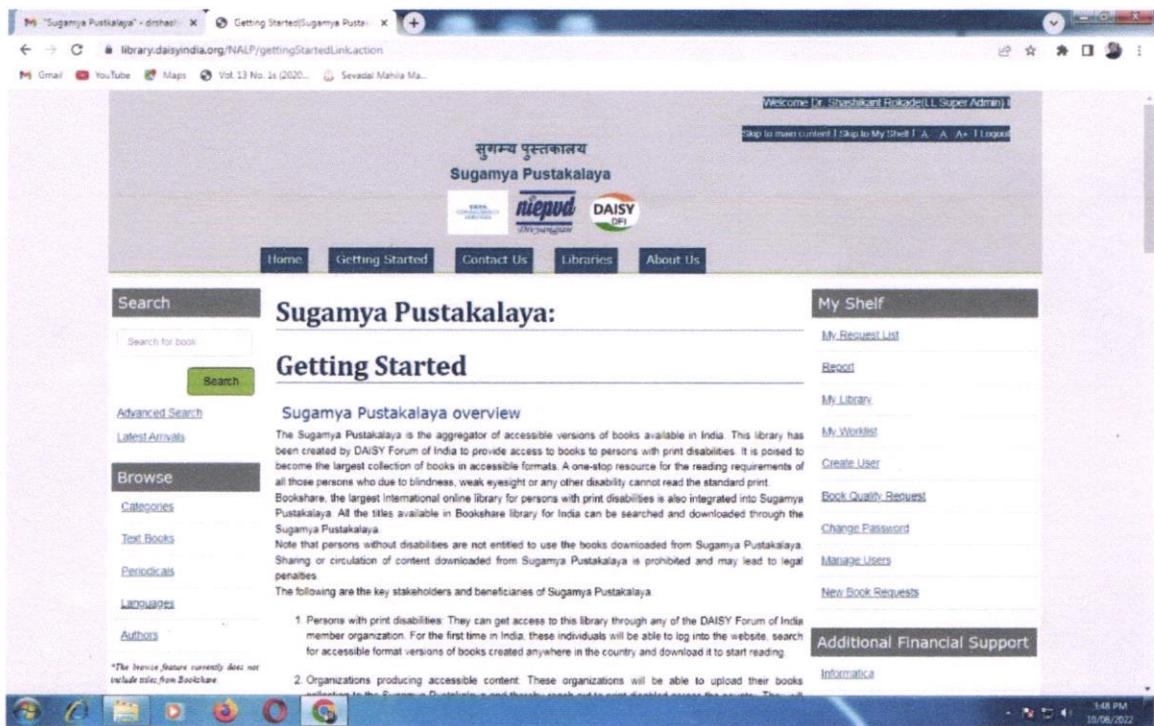
Principal
Sevadal Mahila Mahavidyalaya
Umrer Road, Nagpur-9.



Differently-abled friendly sloping path leading to college reading room and examination room..

Sm


Principal
Sevadal Mahila Mahavidyalaya
Umrer Road, Nagpur-9.



Sugamya Pustakalaya is the portal available in the college library for the visual impaired students.

B. S. Mandhate
 Coordinator
 Criterion VII
 Institutional Values and Best
 Practices



Prof. Pravin Charde
 Principal
 Sevalal Mahila Mahavidyalaya, Nagpur
 Sevalal Mahila Mahavidyalaya
 Umrer Road, Nagpur-9.